



Datasheet

Gas Discharge Tube (GDT)

Series / Models	SMD4532 Series
Product Code	10.12.02.XXXX
Version	A7
Date	2025-02-08
File Number	SP-GDT-004

Version History

Version	Date	Page	Description	Author
A0	2017-04-20	/	Initial draft	George Hu
A1	2018-01-21	Page 4	Add 10/700μS electrical characteristics	George Hu
A2	2018-08-24	All	Use a new document layout	XianTao Jiang
A3	2023-01-13	Page 4	Update Certifications table	George Hu
A4	2024-01-19	Page 4	Update Electrical Characteristics	Xia Wu
A5	2024-03-08	Page 5	Update Certifications table	Xia Wu
A6	2024-08-19	Page 4	Update Electrical Characteristics	Xia Wu
A7	2025-02-08	Page 1,2	Add cover and version history	Xia Wu

Gas Discharge Tube (GDT)

SMD4532 Series

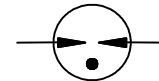
Description

Gas discharge tubes (GDTs) are generally in a high insulation resistance state, equivalent to an open circuit, which has almost no impact on the normal operation of the circuit. When transient overvoltage occurs in the circuit and the voltage amplitude exceeds the breakdown voltage of the GDT, the gas inside the GDT is ionized, causing the GDT to quickly conduct and limit the overvoltage to a lower level, thereby protecting electronic devices or circuit components connected in parallel from high voltage impact damage. After the overvoltage disappears, the GDT immediately returns to a high insulation resistance state, and the circuit resumes normal operation.

The SMD4532 series GDT is a surface mount packaged component. Not only is it small in size and easy to install on various compact printed circuit boards (PCBs), but it also has excellent performance. The low capacitance characteristic minimizes its impact on signals when used in high-frequency communication circuits. High insulation resistance ensures that the performance of the circuit will not suffer additional losses under normal operating conditions. The SMD4532 series GDT can not only be used to protect communication interfaces, but its ability to withstand high surge currents (8/20uS, 2KA) also makes it suitable for power supply protection.



Electrical symbol



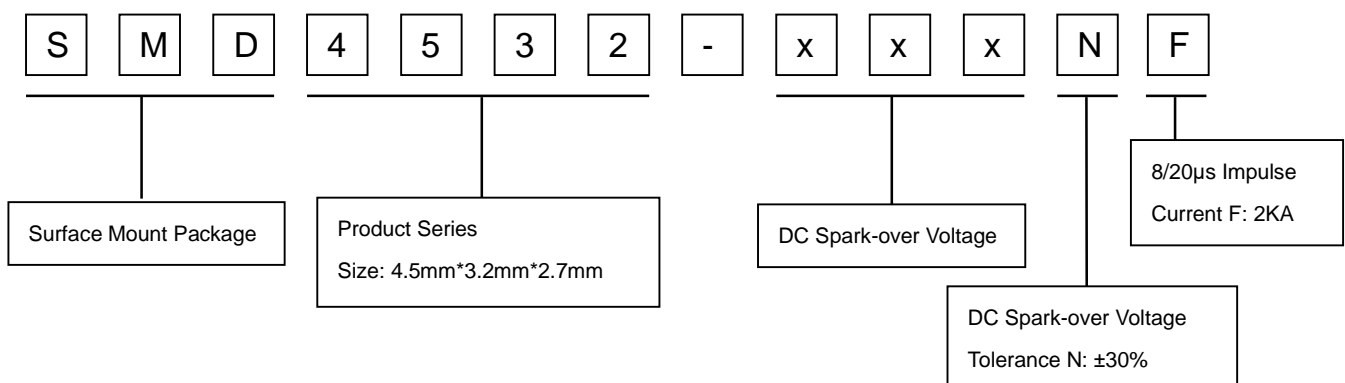
Features

- I Excellent response to fast rising transients
- I Stable breakdown voltage
- I GHz working frequency
- I 8/20μs Impulse current capability: 2KA
- I Surface Mount package
- I Non-Radioactive
- I Ultra low capacitance(<0.5pF) and insertion loss
- I Very small size: 4.5mm*3.2mm*2.7mm (EIA 1812)

Applications

- I Communication equipment
- I Test equipment
- I Data lines
- I Power supplies
- I Telecom SLIC protection
- I Broadband equipment
- I ADSL equipment, including ADSL2+
- I XDSL equipment
- I Satellite and CATV equipment
- I General telecom equipment

Part Number Code



Gas Discharge Tube (GDT)

SMD4532 Series

Electrical Characteristics

Part Number	DC Spark-over Voltage ^{1) 2)} @100V/S	Impulse Spark-over Voltage		Insulation Resistance ³⁾	Capacitance @1MHz	Glow Voltage @10mA	Arc Voltage @1A	Life Ratings ⁴⁾				
		100V/μS	1KV/μS					Impulse Discharge Current @8/20μS		Alternating Discharge Current @50Hz 1S	Impulse Withstanding Voltage Capacity @10/700μS, 40W	Impulse Life @10/1000μS
								Max	Max			
	V	V	V	GΩ	pF	V	V	KA	KA	A	KV	A
SMD4532-070NF	70±30%	500	600	1	0.5	60	10	2	3	2	6	10
SMD4532-075NF	75±30%	500	600	1	0.5	60	10	2	3	2	6	10
SMD4532-090NF	90±30%	500	600	1	0.5	60	10	2	3	2	6	10
SMD4532-150NF	150±30%	500	600	1	0.5	60	10	2	3	1	6	10
SMD4532-200NF	200±30%	600	700	1	0.5	60	10	2	3	1	6	10
SMD4532-230NF	230±30%	600	700	1	0.5	60	10	2	3	1	6	10
SMD4532-300NF	300±30%	700	800	1	0.5	60	10	2	3	1	6	10
SMD4532-350NF	350±30%	750	800	1	0.5	60	10	2	3	1	6	10
SMD4532-400NF	400±30%	800	850	1	0.5	135	15	2	3	1	6	10
SMD4532-420NF	420±30%	800	850	1	0.5	135	15	2	3	1	6	10
SMD4532-470NF	470±30%	800	900	1	0.5	135	15	2	3	1	6	10
SMD4532-500NF	500±30%	850	950	1	0.5	135	15	2	3	1	6	10
SMD4532-600NF	600±30%	900	1000	1	0.5	135	15	2	3	1	6	10
SMD4532-800NF	800±30%	1200	1400	1	0.5	135	15	2	3	1	6	10
SMD4532-1000	1000±20%	1400	1600	1	0.5	150	16	2	3	1	6	10
SMD4532-1500	1500±20%	1800	2000	1	0.5	260	20	2	3	1	6	10
Glow to Arc transition Current.....						<0.2A						
Weight.....						~0.20g						
Operation temperature						-40~+125°C						
Recommended storage ⁵⁾												
- Temperature						+5~+35°C						
- Humidity						45~+80%						
- Period.....						≤ 2 years						

Gas Discharge Tube (GDT)

SMD4532 Series

Climatic category (IEC 60068-1).....	40/125/21
Marking.....	Without
Surface treatment.....	Matte-tin plated
Moisture sensitivity level ⁶⁾	1

¹⁾ At delivery AQL 0.65 level II, DIN ISO 2859.

²⁾ In ionized mode.

³⁾ Insulation Resistance Measuring Voltage: nominal voltage 70~150V at DC 50V, others at DC 100V.



⁴⁾ Tests according to ITU-T K.12 and UL 497B.

⁵⁾ Specified in terms of corrosion against tin plating.

⁶⁾ Tests according to JEDEC J-STD-020.

Terms and current waveforms in accordance with ITU-T K. 12, IEC61643-21 and IEC 61643-311.

Certifications table

Part Number		
	UL497B E465335	EN 61643-311 IEC 61643-311 J50569381
SMD4532-070NF	--	--
SMD4532-075NF	◎	--
SMD4532-090NF	◎	--
SMD4532-150NF	◎	--
SMD4532-200NF	◎	--
SMD4532-230NF	◎	--
SMD4532-300NF	◎	--
SMD4532-350NF	◎	--
SMD4532-400NF	◎	--
SMD4532-420NF	--	--
SMD4532-470NF	◎	--
SMD4532-500NF	--	--
SMD4532-600NF	◎	◎
SMD4532-800NF	--	--
SMD4532-1000	--	--
SMD4532-1500	--	--

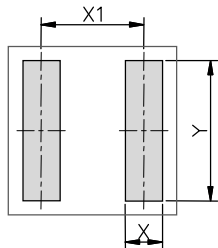
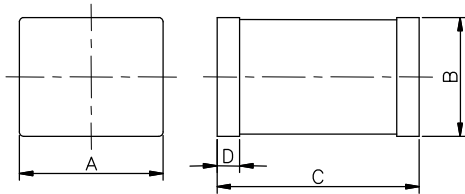
Notes:

- ◎ indicates that the product has passed the certification.
- indicates that the product is not certified.

Gas Discharge Tube (GDT)

SMD4532 Series

Dimensions

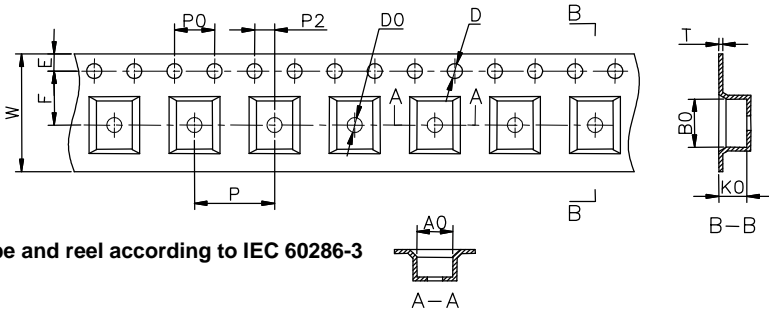


Recommended Soldering Pad Layout

Symbol	Millimeters	Inches
A	3.2±0.2	0.126±0.008
B	2.7±0.2	0.106±0.008
C	4.5±0.3	0.177±0.012
D	0.5±0.1	0.020±0.004
X	1.5	0.059
X1	4.5	0.177
Y	4.2	0.165

Packaging Information

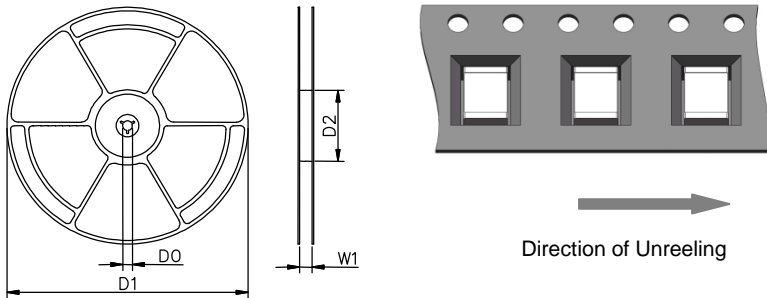
Tape Specifications



Tape and reel according to IEC 60286-3

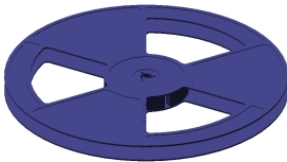
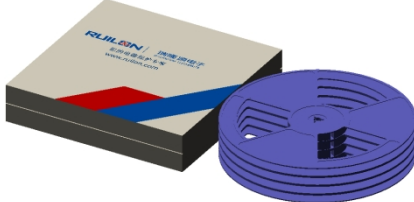
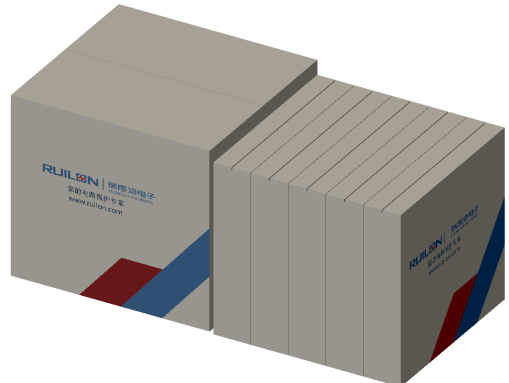
Symbol	Millimeters	Inches
W	12±0.3	0.472±0.012
A0	3.5±0.1	0.138±0.004
B0	5.3±0.1	0.209±0.004
K0	2.9±0.1	0.114±0.004
P	8.0±0.1	0.315±0.004
F	5.5±0.1	0.217±0.004
E	1.75±0.1	0.069±0.004
D	1.5+0.1/-0.0	0.059+0.004/-0.0
P0	4±0.1	0.157±0.004
P2	2±0.1	0.079±0.004
T	0.35±0.05	0.014±0.002
D0	13.3±0.15	0.524±0.006
D1	330±2	12.992±0.079
D2	100+1/-2	3.937+0.039/-0.079
W1	12.5±0.4	0.492±0.016

Reel Specifications

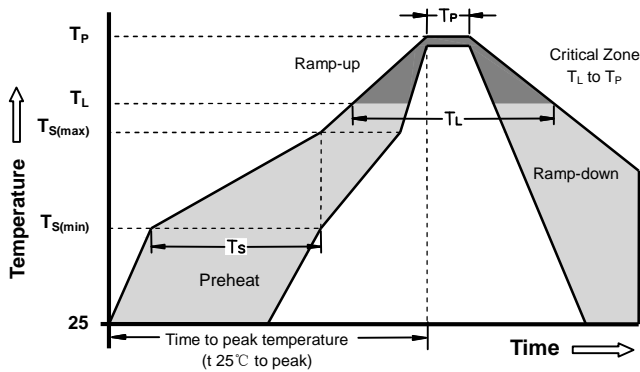


Gas Discharge Tube (GDT)

SMD4532 Series

	Reel	Inner Box	Carton
Size	330×17mm	340×333×70mm	375×353×380mm
Quantity	MPQ/MOQ: 1 reel=2,500pcs	1 Inner Box=4 reels=10,000pcs	1Carton=5 Inner boxes=50,000pcs
Photos			

Soldering Parameters - Reflow Soldering (Surface Mount Devices)



Reflow Condition		Pb - Free assembly
Preheat	-Temperature Min ($T_{s(min)}$)	150°C
	-Temperature Max ($T_{s(max)}$)	200°C
	- Time (min to max) (t_s)	60 -180 Seconds
Average ramp up rate (Liquids Temp T_L) to peak		3°C/second max
$T_{s(max)}$ to T_L - Ramp-up Rate		5°C/second max
Reflow	- Temperature (T_L) (Liquids)	217°C
	- Time (min to max) (t_s)	60 -150 Seconds
Peak Temperature (T_P)		260 +0/-5°C
Time within 5°C of actual peak Temperature (t_p)		10 - 30 Seconds

Surface mounted components (SMD) may exhibit a temporary increase in the DC spark-over voltage after the solder reflow process. The components will recover within 24 hours. There are no quality defects or changes in protection level during the temporary change of DC spark-over voltage.

Gas Discharge Tube (GDT)

SMD4532 Series

Terms and definitions

NO.	Item	Definitions
1	Gas discharge tube(GDT)	A gap, or several gaps, in an enclosed discharge medium, other than air at atmospheric pressure, designed to protect apparatus or personnel, or both, from high transient voltages. Also referred to as "gas tube surge arrester".
2	DC Spark-over Voltage	The voltage at which the gas discharge tube sparks over with slowly increasing d.c. voltage.
3	Impulse Spark-over Voltage	The highest voltage which appears across the terminals of a gas discharge tube in the period between the application of an impulse of given wave-shape and the time when current begins to flow.
5	Arc voltage	Voltage drop across the GDT during arc current flow.
6	Glow voltage	Peak value of voltage drop across the GDT when a glow current is flowing.
7	Impulse discharge current 8/20μs	Current impulse with a nominal virtual front time of 8 μs and a nominal time to half-value of 20 μs.
8	Alternating Discharge Current	The rms value of an approximately sinusoidal alternating current passing through the gas discharge tube.
9	Insulation Resistance	Insulation resistance shall be measured from each terminal to every other terminal of the GDT. The test is performed with DC50V when normal spark-over Voltage 70~150V, others with DC100V.
10	Capacitance	The capacitance shall be measured once at 1 MHz between all terminals unless otherwise specified.

Cautions

- I Do not operate gas discharge tubes in power supply networks, whose maximum operating voltage exceeds the minimum spark-over voltage of the gas discharge tubes.
- I Gas discharge tubes may become hot in the event of longer periods of current stress (burn risk). In the event of overload the connectors may fail or the component may be destroyed.
- I Gas discharge tubes must be handled with care and must not be dropped.
- I Do not continue to use damaged gas discharge tubes.
- I The shown SMD pad dimensions represent a safe way to mount the arrester and are a recommendation of the manufacturer. During the reflow process it must be assured that no solder material reduces the insulation distance between the pads below the arrester.
- I SMD gas discharge tubes should be soldered within 24 month after shipment.
- I The electrical characteristics described in this datasheet are only typical characteristics, and all of these characteristics have been confirmed through testing and inspection. If the customer's usage requirements are different from this or have special requirements, please contact Ruilongyuan Electronics Co., Ltd. If protection failure or circuit damage occurs as a result, our company is not responsible for it.
- I Ruilongyuan Electronics Co., Ltd. always strives to improve our products. Consequently, the products described in this datasheet may be updated from time to time, and the corresponding product specifications may also be updated accordingly. So, before or at the time of placing your order, please check to what extent the product descriptions and specifications contained in this publication are still applicable. Ruilongyuan Electronics Co., Ltd. still reserves the right to cease production and delivery of products. Consequently, we cannot guarantee that all products listed in this datasheet will always be available. The above provisions do not apply to individual agreements with customers for specific products.
- I Ruilongyuan Electronics Co., Ltd. models may have different product codes. Different product code representations are due to the use of different production processes, but do not affect their respective product specifications.